

59

the little OPERA theatre of ny
presents

59

THE REFORMED DRUNKARD

OPERA BY

CHRISTOPH WILLIBALD GLUCK

CONDUCTOR

RICHARD OWEN

DIRECTED BY

PHILIP SHNEIDMAN

MARCH 16 - 24, 2013

:BILL
THEATER B

little
the little opera theatre of ny
opera



BY
CHRISTOPH WILLIBALD
GLUCK

LIBRETTO BY
LOUIS ANSEAUME
AND
JEAN-BAPTISTE
LOURDET DE SANTERRE
(L'IVROGNE CORRIGÉ)

ADAPTATION AND TRANSLATION BY
IVANA MESTROVIC
AND
PHILIP SHNEIDMAN

THE REFORMED DRUNKARD

little
the little opera theatre of ny
opera

Originally written in two acts, this production incorporates
additional excerpts from Gluck's ballet, *Don Juan*.

MATHURIN
BRIAN DOWNEN*
ANTHONY WRIGHT WEBB**

LUCAS, HIS FRIEND
MATTHEW SINGER*
RON LOYD**

MATHURINE,
WIFE OF MATHURIN
ANNA TONNA*
TERESA BUCHHOLZ**

COLETTE,
NIECE OF MATHURIN
CANDICE HOYES*
JESSICA SANDIDGE**

CLÉON,
IN LOVE WITH COLETTE
MICHAEL BOLEY*
JONATHAN WINELL**

*performances on 3/16, 3/20, 3/23, 3/24 **performances on 3/17, 3/19, 3/21, 3/22

The action takes place in the home of Mathurin. Some time ago in France.
The running time of *The Reformed Drunkard* is 1 hour without an intermission.

CONDUCTOR DIRECTOR
RICHARD OWEN PHILIP SHNEIDMAN

SCENIC DESIGN COSTUME DESIGN LIGHTING DESIGN PRODUCTION STAGE MANAGER
NEIL PATEL LARA DE BRUIJN NICK SOLYOM JEN ASH

PRODUCTION MANAGER STAGE MANAGER WARDROBE/ASSISTANT STAGE MANAGER
DAVID HINKLE JENNA BAUMAN JAMIE BERTOLUZZI

ASSISTANT SCENIC DESIGN ASSISTANT TO THE COSTUME DESIGNER FIGHT CONSULTANT
HANA SOOYEON KIM RYAN HANSON STANLEY BRODE

MUSIC/TRANSCRIPTION ASSISTANT MASTER ELECTRICIAN PROPS COORDINATOR PRODUCTION ASSISTANT
CHRISTOPHER ZUAR IAN JURGENSEN DESTINY SHEGSTAD MINAH YIM

CHAMBER ENSEMBLE

CONDUCTOR, HARPSICHORD VIOLIN (CONCERTMASTER)
RICHARD OWEN FRANCISCO SALAZAR

VIOLIN VIOLA CELLO OBOE
ALI BELLO ADAM HILL RUBIN KODHÉLI SLAVA ZNATCHENII

2ND COVER FOR MATHURINE
SAHOKO SATO

Generous support for this production received from:
The Maurice Marciano Family Foundation, The Athena Foundation, Sascha S. Bauer,
and Paula Cooper & John Macrae III

ABOUT THE COMPOSER

CHRISTOPH WILLIBALD GLUCK (1714-1787)



The son of a forester, Gluck spent his early years in Bohemia, Austria and Italy. His first opera *Artaserse* premiered in Milan in 1741, when the composer was 27. Eleven years later he settled in Vienna and began writing *opéras comiques*, whose playful, inventive stories and corresponding dramatic structure comprised a vivid departure from that period's prevailing *opera seria* characteristics. Gluck's eight comic operas, dating from the middle of his career, helped expand his musical vocabulary and led to the integration of music and drama in his later works.

ABOUT THE OPERA

L'Ivrogne Corrigé (The Reformed Drunkard) had its premiere at Vienna's Burgtheater in 1760. Written two years prior to his celebrated work on *Orfeo ed Euridice* (1762), this opera's original libretto is by Louis Anseaume and Jean-Baptiste Lourdé de Santerre and is based upon a fable of La Fontaine.

In a state of inebriation, Mathurin decides to marry off his niece Colette to his drinking buddy Lucas. Colette, her aunt Mathurine and her true love, Cléon, launch a dramatic attempt to thwart his plans. After Mathurin passes out from drinking too much wine, they design a hallucinatory trip to the underworld. Disguised as Pluto and two Furies, they place Mathurin's excessive drinking and reckless ways on trial.

ABOUT THE CAST



MICHAEL BOLEY

(Cléon - tenor)

Roles: Pinkerton (*Madama Butterfly*), Rodolfo (*La Bohème*), Tamino (*The Magic Flute*), Hoffmann (*Les contes d'Hoffmann*), and Duke of Mantua (*Rigoletto*).



TERESA BUCHHOLZ

(Mathurine - mezzo-soprano)

Concert: Danbury Concert Chorus (*Messiah*), Bard Music Festival (Chausson's *Chanson Perpetuelle*), OK Mozart Festival and Manhattan Concert Productions (Mozart's *Requiem*), Symphony of NW Arkansas (Beethoven's *Symphony No. 9*), Israel Philharmonic (Bloch's *Sacred Service*), RI Civic Chorale and Chorus (Tippett's *A Child of our Time*). www.teresabuchholz.com



BRIAN DOWNEN

(Mathurin - tenor)

Recently: Pensacola Opera (*Il Barbiere di Siviglia*), Opera Moderne (*Der Kaiser von Atlantis*), York Symphony (*Carmina Burana*), Opera Omaha (*The Marriage Contract*), Caramoor Festival (*Guillaume Tell*), Opera Saratoga (*Don Pasquale*). Upcoming: York Symphony (Beethoven's *Symphony No. 9*), Gotham Chamber Opera (*La hija de Rappaccini*), The Bhutan Opera Project (*Acis and Galatea*), Pensacola Opera (*La Cenerentola*).



CANDICE HOYES

(Colette - soprano)

Opera: Castleton Festival (*Beggar's Opera-mazel*), Nevada Opera (*Die Fledermaus*), Florida Opera Theatre (*Il Barbiere di Siviglia*), Opera Naples (*Die Zauberflöte*), Amadeus Ensemble (*Le Nozze di Figaro*). Concert: Caramoor (*Miserere in D*), Zankel Hall, Akron Symphony (*Richard Rodgers*), Ft. Myers Philharmonic (*Fauré Requiem, Nelson-Messe*). Harvard University, BA.



RON LOYD

(Lucas - baritone)

Opera: Opera Southwest (*Don Giovanni*), NJ Verismo (*Pagliacci*), Salt Marsh Opera (*Rigoletto*), Baltimore Concert Opera (*Tosca*), Nevada Opera (*Le Nozze di Figaro*), El Paso Opera (*Madama Butterfly*), Mobile Opera (*Sunset Boulevard*), LOOK Musical Theatre (*Sweeney Todd*). Concert: Collegiate Chorale (*Israel in Egypt*), Pensacola Symphony (Beethoven's *Symphony No. 9*) www.ronloyd.com



JESSICA SANDIDGE

(Colette - soprano)

Opera: New York Lyric Opera Theater (*Die Fledermaus*), Liederkrantz Opera Theater (*Das Rheingold, Der Vampyr*), Chelsea Opera (*Le Nozze di Figaro, Gianni Schicchi*), Brooklyn Repertory Theater (*Le Nozze di Figaro*). Other Roles: Queen of the Night (*Die Zauberflöte*), Lucia (*Lucia di Lammermoor*), and Violetta (*La Traviata*).



SAHOKO SATO

(2nd cover for Mathurine - mezzo-soprano)

Opera: Syracuse Opera (*Madama Butterfly, Le Nozze di Figaro*), Baltimore Opera (*Così fan tutte*), Chautauqua Opera (*Mikado*), Seiji Ozawa Opera (*Elektra, Die Fledermaus, Le Nozze di Figaro*). Concert: New York Choral Society Summer Sing (*Verdi Requiem*), Academy of St. Martin in the Fields (*Mendelssohn - Midsummer Night's Dream*).



MATTHEW SINGER

(Lucas - baritone)

Opera: Salt Marsh Opera (*Lucia di Lammermoor, La Bohème*), Opera in the Highlands (*I Pagliacci, Cavalleria Rusticana*), Taconic Opera (*The Magic Flute, Così fan tutte*), Asheville Lyric Opera (*Le Nozze di Figaro, The Merry Widow*), Light Opera Oklahoma (*The Mikado, Too Many Sopranos, Fiddler on the Roof*).

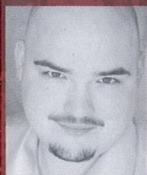


ANNA TONNA

(*Mathurine* - mezzo soprano)

Opera: Connecticut Grand Opera (*Maria de Buenos Aires, Luisa Fernanda*), Opera Illinois (*Barbiere di Siviglia*), NJ State Opera (*Barbiere di Siviglia*), Teatro

Grattacielo (*Guglielmo Radcliff, La farsa amorosa, Il Re*), NY Grand Opera (*Stiffelio, Le Nozze di Figaro, Cavalleria Rusticana*). Recital: Casals Festival of Puerto Rico. Awards: Fulbright Scholar, Liederkrantz Foundation.



ANTHONY WRIGHT WEBB

(*Mathurin* - tenor)

Opera: Opera Theatre of St. Louis (*Sweeney Todd, Alice in Wonderland*), Taconic Opera (*Mefistofele*), Caramoor Festival (*Guillaume Tell, HMS Pinafore*), Bel

Cantanti Opera (*L'Italiana in Algeri*), Des Moines Metro Opera (*Susannah, Markheim, Macbeth*)
Upcoming: Bronx Opera (*La Bohème*), Hugo Kauder Society (*Merlin* - World Premiere)



JONATHAN WINELL

(*Cléon* - tenor)

Roles: Rodolfo (*La Bohème*), Rinuccio (*Gianni Schicchi*), Ernesto (*Don Pasquale*), Tamino (*Die Zauberflöte*), Lord Percy (*Anna Bolena*) and Nadir (*Les Pêcheurs des Perles*). Upcoming:

The Santa Fe Opera (2013 Apprentice Singer), *Staatsoper Berlin* (Young Artist Studio 2013-14).

ABOUT THE CREATIVE TEAM

RICHARD OWEN

(*Conductor/Harpsichord*)

Company: Camerata NY Orchestra - Music Director, Deutsche Oper am Rhein - conductor, New York Philharmonic - cover conductor, San Francisco Opera - visiting conducting associate. Orchestras conducted: Belgrade, Duisburg, Dusseldorf, Staatskapelle Weimar, Monterrey, Rzeszow, Silesia, New York, Pacific, Jacksonville. Opera Co. conducted: Baltic Opera, Bleecker Street Opera, Amore Opera, Delaware Valley Opera. Education: Dartmouth College (BA), Manhattan School of Music (MA), Vienna Univ. of Music.

PHILIP SHNEIDMAN

(*Director*)

Founder and Artistic Director, the little OPERA theatre of ny. Opera: little OPERA (*Travelers, La Finta Giardiniera, 2 Little Tragedies of Pushkin, Man in a Black Coat, Mitridate, re di Ponto*), Mannes (*Eugene Onegin, Dialogues of the Carmelites*). Theater: *Fully Committed* (Adirondack Theater Festival), *HERE* (*Vladimir Mayakovsky, a Tragedy*). Assistant Director: Broadway (*The Full Monty*), Lincoln Center Theater (*The Heiress, A Delicate Balance, Pride's Crossing*).

STEPHANIE ALTMAN DOMINUS

(*Managing Director*)

Dunch Arts (consulting), Symphony Space (Producer of Music and Family Programs, Administrative Director), Blue Circle Theater (Managing Director), The Juilliard School (Assistant Director of Community Performing Arts), Harvard University, BA; City University London, MA.

NEIL PATEL

(*Scenic Design*)

Theater (Broadway): *Side Man, 'night mother, Ring of Fire, [title of show], Oleanna, Wonderland*.

Opera: Washington National Opera, Santa Fe Opera, Houston Grand Opera, Nikikai Opera Theater Tokyo, Chicago Lyric, Minnesota Opera, Opera Theater St Louis. Film: *Some Velvet Morning* (Neil LaBute).

Television: *In Treatment* (HBO).

LARA DE BRUIJN

(*Costume Design*)

Theater: Merrimack Rep, Berkshire Theatre Group, Portland Stages, La MaMa, 59E59, Peterborough Players, Flux Theatre, Flea Theatre, WORKhouse Theatre, Trinity Rep Consortium, among others. Opera: *Travelers* and *Man in a Black Coat* (the little OPERA theatre of ny), *Transformations* and *L'Enfant et les Sortilèges* (Boston Conservatory), *A Little Night Music* (Castleton Opera Festival). Upcoming: *Laughing Stock* (Peterborough Players).

NICK SOLYOM

(*Lighting Design*)

Theater: *Twelfth Night Wall Street* (Co-Op Theatre East), *The Glass Menagerie* (College of New Rochelle). Brown University/Trinity Repertory:

A Midsummer Night's Dream, Vieux Carré, The Rover, and *The Threepenny Opera*. He is an alumnus of NYU's Graduate Department of Design. SolyomDesign.com

IVANA MESTROVIC

(*Co-Author of Adaptation and Translation*)

Ivana has written catalog essays for several artists as well as co-editing *Socrates Sculpture Park: 20th Anniversary*. She has studied poetry with Rachel Hadas and Cornelius Eady.

CATHERINE MILLER

(*Associate Music Director*)

Opera: *Travelers, The Mother of Us All, 2 Little Tragedies of Pushkin, The Bohemians, Man in a Black Coat* (the little OPERA theatre of ny), among many others. Active collaborative pianist for recitals, auditions, and masterclasses. NYC performance venues include Weill Recital Hall, Performing Arts Library, Greenwich House Music School.

JEN ASH

(*Production Stage Manager*)

Current Projects: Arts Brookfield Entertainment LLC, DIMA Productions LLC. New York: *The Minervae Project, Incendiary Agents, The Transition of Doodle Pequeño, A Tribute To Marvin Hamlisch*. Regional: *Anton In Show Business, VIVA! El Paso, The Amigo Airshow, The Juilliard School: Romeo and Juliet, The World In The Moon, New Dances, Kommilitonen!*

DAVID HINKLE

(*Production Manager*)

Psycho-Clan (*The Experiment, A Nightmare Before Christmas*), Haunted Holdings NYC (*Nightmare, Killers*), Classic Stage Company (*Passion*), Barrow Street Theater (*Hit the Wall*), LCT 3 (*Luck of the Irish*), The Kitchen (*Radiohole*).

For the little OPERA theatre of ny

FOUNDER & ARTISTIC DIRECTOR

PHILIP SHNEIDMAN

MANAGING DIRECTOR

STEPHANIE ALTMAN DOMINUS

MUSIC DIRECTOR

RICHARD CORDOVA

ASSOCIATE MUSIC DIRECTOR

CATHERINE MILLER

PUBLIC RELATIONS

PAULA MLYN & LEE STREBY, A440 ARTS GROUP

GRAPHICS

JOYCE WEINER, HALLETS COVE STUDIO

FINANCIAL ASSOCIATE

MADLINE DJEREJIAN

PHOTOGRAPHER

TINA BUCKMAN

WEB CONSULTANT

JENNIFER SULLIVAN

little OPERA wishes to thank **STROOCK & STROOCK & LAVAN** for providing pro bono counsel.

SPECIAL THANKS

The TDF Costume Collection for its assistance in this production.

Harpichord courtesy of Baroque Keyboards.

Andrew Dominus, Joyce Weiner, Paul Smithyman, Tucker A. Johann, NOLA Studios, Lincoln Center Library for the Performing Arts, Bruce Alan Brown, Sara Sievers, Michael Freedman, Maggie Robbins, Richard Porterfield, Nicholas Urie, Ed Brewer, NYU Costume Department, Guthrie Theater Costume Shop, Kalmus Music.

BOARD OF DIRECTORS

WILLIAM GOLDSTEIN

STEVEN P. HENRY

IVANA MESTROVIC

TIMOTHY P. ROBBINS

PHILIP SHNEIDMAN

JONATHAN WATERFIELD

little OPERA

WOULD LIKE TO THANK THE FOLLOWING FOR THEIR CONTINUING SUPPORT:

FOUNDERS

The Athena Foundation, Sascha S. Bauer, Eileen & Michael Cohen, Paula Cooper & John Macrae III, Katherine Farley & Jerry Speyer, Steven P. Henry, Victoria & Peter Kopke, The Kraus Family Foundation, The Maurice Marciano Family Foundation, Richard & Ronay Menschel, Ivana Mestrovic, Lisa Schiff, Elena Sorrè & Timothy P. Robbins, The Sam Spiegel Foundation, B & M Wright Foundation

CHAMPIONS

Peder Bonnier, Stephen Mazoh & Martin Kline, Schwab Charitable Fund, Jonathan Waterfield, Eva & Max Weissman

ANGELS

Louise Eliasof & James Sollins, The Furman Family, Anne & Arthur Goldstein, Wayne Gonzales, Jay Philip Gorney & Tom Herman, Stacey Kinnamon & Mark Friedman, Carol LeWitt, Sofia LeWitt, Christin & Jonathan Putnam, Albert Wojnilower

SUPPORTERS

Harry Allen & John Holm, Bonnie & Matt Altman, Marilyn & S. Morton Altman, Elizabeth C. Baker, John Lee Beatty, André Bishop, Florence & Alvin Blaustein, Stuart Coleman, Jodi & Andrew Dady, Goldie Daniels, Flora & Jerome Dominus, Aaron Fleischman & Lin Loughheed, Thelma Golden, Diane & John Haney, Tiziana & Hugh Hardy, Maura Harway & Richard Mark, Gerry & Jocelyn Hecker, Joeseoph Hershberger & Gregg Gelman, Mikhail Iliev, Steven Incontro & David Joselit, Kathleen & Jim Jacobs, Alexis Johnson, Julia Judge, Ellen Kern, Jane Kirk & Paul Bascobert, Carolyn Lanchner, Charles LeDray & Matthew Wieland, Julian Lethbridge, Mahony Projects, Roger Mooney & Donald Steele, Sharon Musher & Daniel Eisenstadt, Shannon Lowry Nagle, Paula Pelosi, Sam & Martha Peterson, Patricia Robbins, Daniel Rosenbaum, Leonard & Colombe Rosenberg, Anne Overlin Severy, Jack Shneidman, Doris & Daniel Shneidman, Sara Sievers, Phillip Smaylovsky, Peter Tear, Gregory M. Trupiano & Lon Black, Deb Waldman & John Gatsos, Lois Weinroth, Amy Wolf & John Hatfield, Charles Wylie, Martha Zlatchin

little
the little opera theatre of ny
opera

For more about the little OPERA theatre of ny please visit us at www.lotny.org

little OPERA is a sponsored project of Fractured Atlas, a non-profit arts service organization.

the little OPERA theatre of ny
Old Chelsea Station, PO Box 1392, New York, NY 10113 www.lotny.org